

# CERTIFICATE OF LOCATION OF GOVERNMENT CORNER

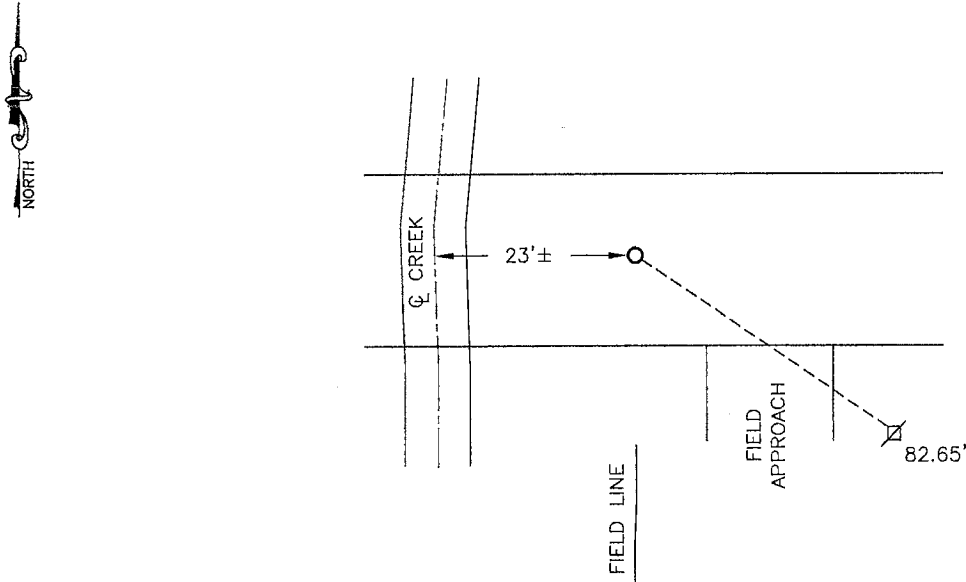
NORTH QUARTER Corner of Section 3, Township 105, Range 41, 5TH P.M.

STATE OF MINNESOTA, County of MURRAY

At the corner location shown on the sketch:

- On \_\_\_\_\_ found a \_\_\_\_\_  
DATE
- left monument as found,  lowered monument,  removed monument (explain)
- On 10/15/13 placed a 5/8" iron w/seal #43844  
DATE

### SKETCH OF REFERENCE TIES



Minnesota State Plane Coordinate  
System Murray County Datum  
NAD83 (1996)  
N: 131740.712  
E: 503441.627

Nail and survey marker in utility pole SE 82.65'  
Corner is 23'± east of centerline of creek.

Statement of evidence relative to this corner location is on back of page.

I hereby certify that this document and the data contained herein was prepared by me or under my direct supervision.

  
SIGNATURE

2/5/14  
DATE

Registration No. 43844

- Land Surveyor,  Professional Engineer
- County Surveyor,  County Engineer

### OFFICE OF THE COUNTY RECORDER

County of \_\_\_\_\_

I hereby certify that this document was filed in the Co. Recorders office at \_\_\_\_\_ .M on the \_\_\_\_\_ day of FEB 5 2014 A.D. 20\_\_\_\_

County Recorder James V. Johnson  
By \_\_\_\_\_, Deputy

DOCUMENT NO. \_\_\_\_\_

## Statement of Evidence

In 1861, J.W. Myers did the original survey of the north line of the township.

In 1898, J.W. Woolstencroft set a stake 6' east of a bridge on the north side of grade at this corner. He measured 40.04 chains to the section corners both east and west.

In 1977, the DNR Bureau of Engineering set a  $\frac{1}{2}$ "x14" iron pipe midway and on line between section corners. It is 20'± east of the center of the creek, in line with a fence to the north, and 2' north of centerline of road. It fits both the 1898 survey and the original survey.

On October 14, 2013, Bueltel-Moseng Land Surveying found nothing at the corner. We set a 5/8" iron with seal #43844 midway and on line as done during the 1898 and 1977 surveys. It is 23'± east of the centerline of creek and in the centerline of road.